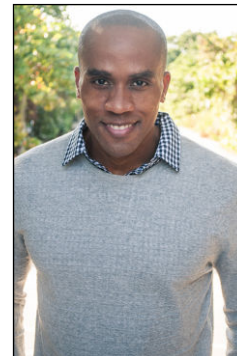
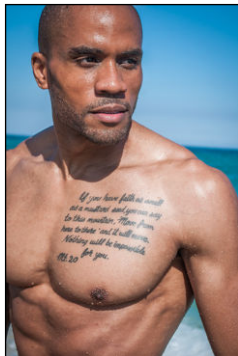
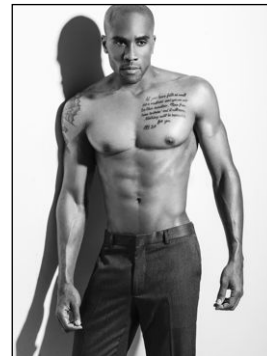
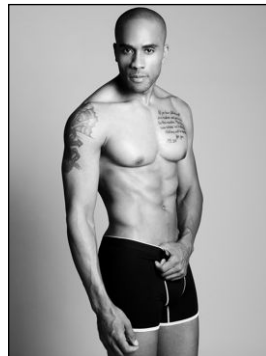




CHOSEN MODEL MANAGEMENT ANTOINE SMITH

HEIGHT: 6'3" HAIR: BLACK EYES: BROWN SUIT: 42" LENGTH: L SHIRT: 15.5" SLEEVE: 35" WAIST: 32" INSEAM: 34" SHOE: 12





CHOSEN MODEL MANAGEMENT
ANTOINE SMITH

HEIGHT: 6'3" HAIR: BLACK EYES: BROWN SUIT: 42" LENGTH: L SHIRT: 15.5" SLEEVE: 35" WAIST: 32" INSEAM: 34" SHOE: 12

